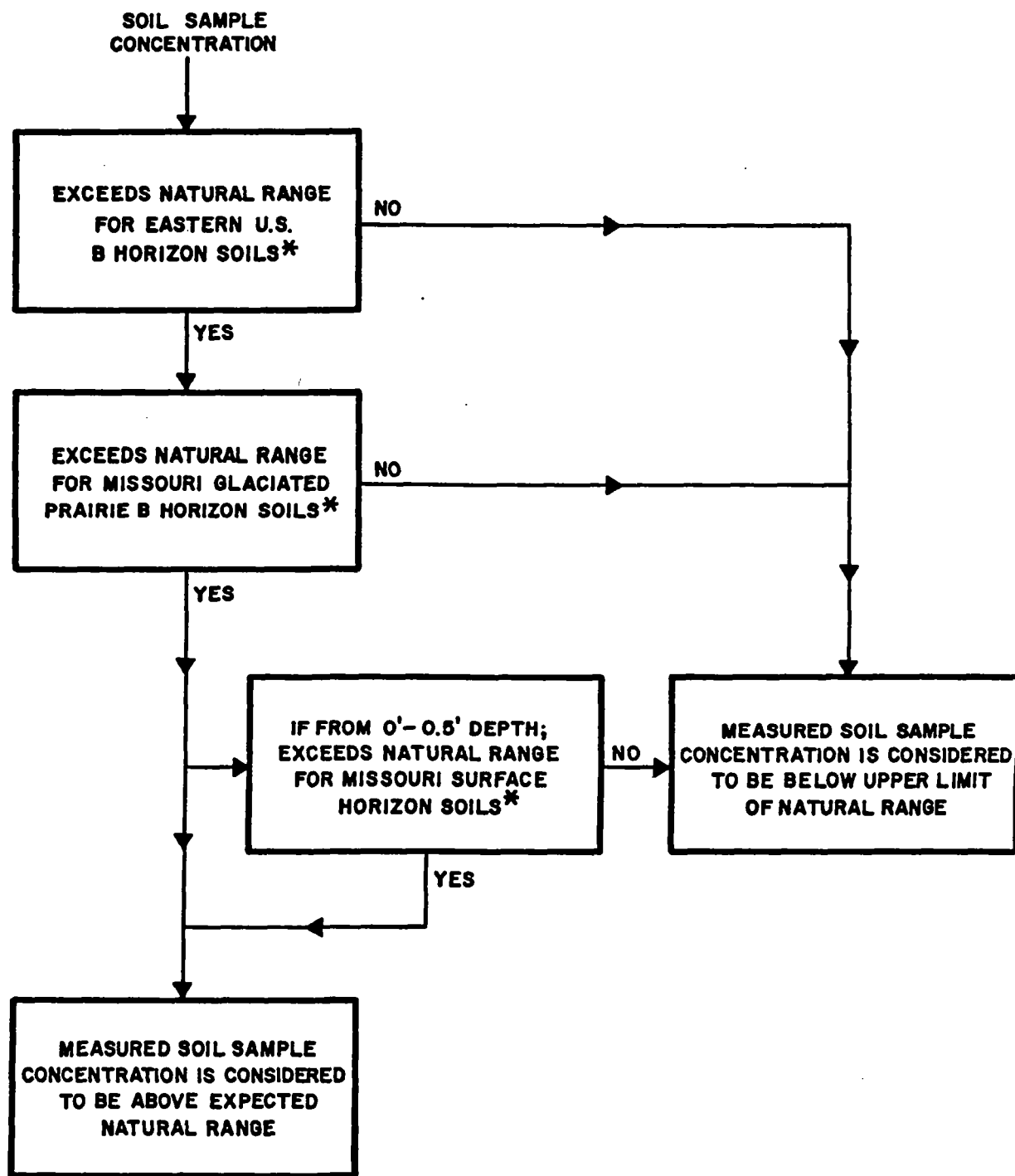


FIG6-7 12/07/92

**NOTE:**

* CONNOR, J. AND SHACKLETTE, H., 1975, BACKGROUND GEOCHEMISTRY OF SOME ROCKS, SOILS, PLANTS AND VEGETABLES IN THE CONTERMINOUS UNITED STATES, USGS PAPER 574 F, UNITED STATES GEOLOGICAL SURVEY. IOWA IS INCLUDED IN THE U.S.G.S. DEFINITION OF "EASTERN U.S."

FIGURE 6-8

**FLOW CHART FOR EVALUATING
CONCENTRATIONS OF INORGANIC
COMPOUNDS IN SOIL**

**DES MOINES SOUTH AREA
SOURCE CONTROL PROJECT
DES MOINES, IOWA**

**ECKENFELDER
INC.**

Nashville, Tennessee
Mahwah, New Jersey